

Ellen's
H E A D W E A R



ACCENTS

HEADWEAR YOU LOVE



ACCENTS

Finest Comfort Headwear Collection 2019/20

Feine Nuancen, kleine Unterschiede, das gewisse Etwas. Ellen's Headwear bedeutet Leidenschaft für schicke, inspirierende Hüte, Caps und Turbane. Weiche Wohlfühlmaterialien in aufregenden Farben und Formen. Egal, ob sie dezente Nuancen bevorzugen oder modische Ausrufezeichen setzen möchten. Mit der neuen Ellen's Headwear Collection setzen Sie sich in Szene und unterstreichen Ihren Stil. Die 2019/20 Accents sind gemacht zum Wohlfühlen und Verlieben!

Fine nuances, small differences, that certain something. Ellen's Headwear means passion for chic, inspiring hats, caps and turbans. Soft feel-good materials in exciting colours and shapes. Whether you prefer subtle nuances or fashionable exclamation marks. With the new Ellen's Headwear Collection you can put yourself in the limelight and underline your style. The 2019/20 Accents are made to feel good and fall in love!

Ellen Wone

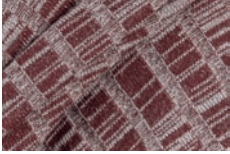


HEADWEAR YOU LOVE

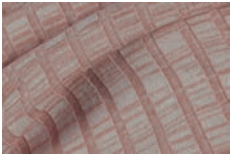
AVANI COLOURS:



marine



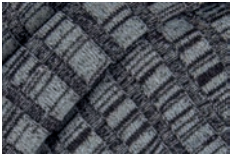
burgundy



antik pink



silver



black



Cap: 55 % Viscose, 40 % Polyester, 5 % Elastane
Lining: 95 % Bamboo Viscose, 5 % Elastane

Ellen's
AVANI



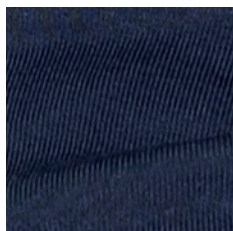
colour: marine

colour: marine

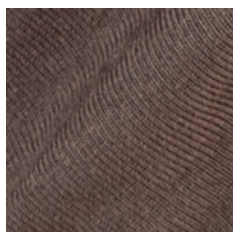


Ellen's DORY

DORY COLOURS:



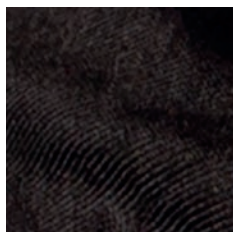
marine



taupe



grey



black



95 % Bamboo Viscose, 5 % Elastane

colour: dark sand



Ellen's MALOU



colour: coral

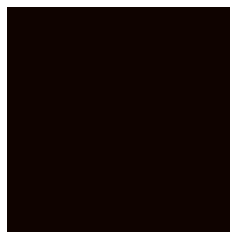
MALOU COLOURS:



coral



dark sand



black



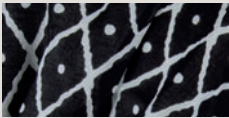
95% Bamboo Viscose,
5% Elastane

Ellen's MISU

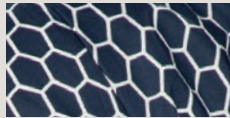


colour: black white

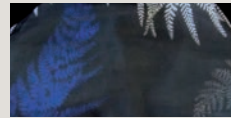
colour: honeycomb blue



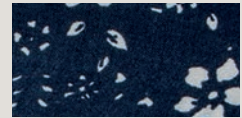
black white ^C



honeycomb blue ^C



flora black ^B



flowers blue ^C



square blue ^A



square white ^A



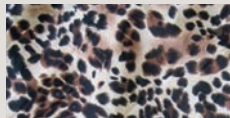
fishbone blue ^A



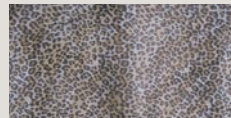
white blue ^A



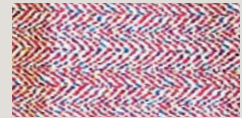
safari ^C



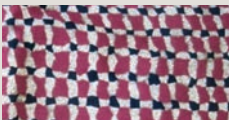
leopard ^B



leo ^B



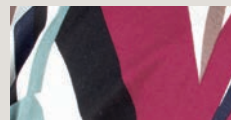
fishbone red ^A



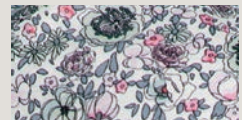
square marsala ^A



tommy ^A



beach ^A



flower field ^C



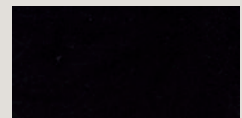
lilac white ^C



coral ^C



marine ^A



black ^A

^A 100 % Viscose

^B 80 % Polyester, 20 % Cotton

^C 100 % Cotton

MISU COLOURS



95 % Bamboo Viscose, 5 % Elastane

MAGENA COLOURS:



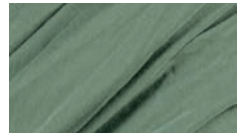
burgundy



taupe



antic pink



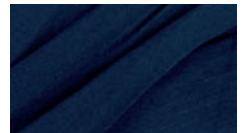
khaki



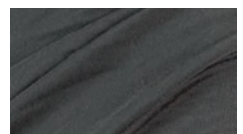
ice blue



jeans



marine



grey

Ellen's
MAGENA



colour: burgundy

Ellen's LULU



LULU COLOURS:



taupe beige



hot coral



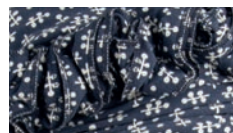
wine red



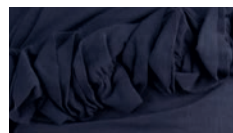
jeans



lavender



disty mussel



marine



black white



95 % Bamboo Viscose, 5 % Elastane



colour: taupe beige



LYRA COLOURS:



bordeaux



coral



purple



petrol



agate



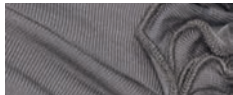
light blue



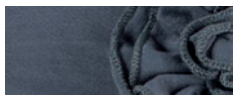
jeans blue



marine



taupe



grey

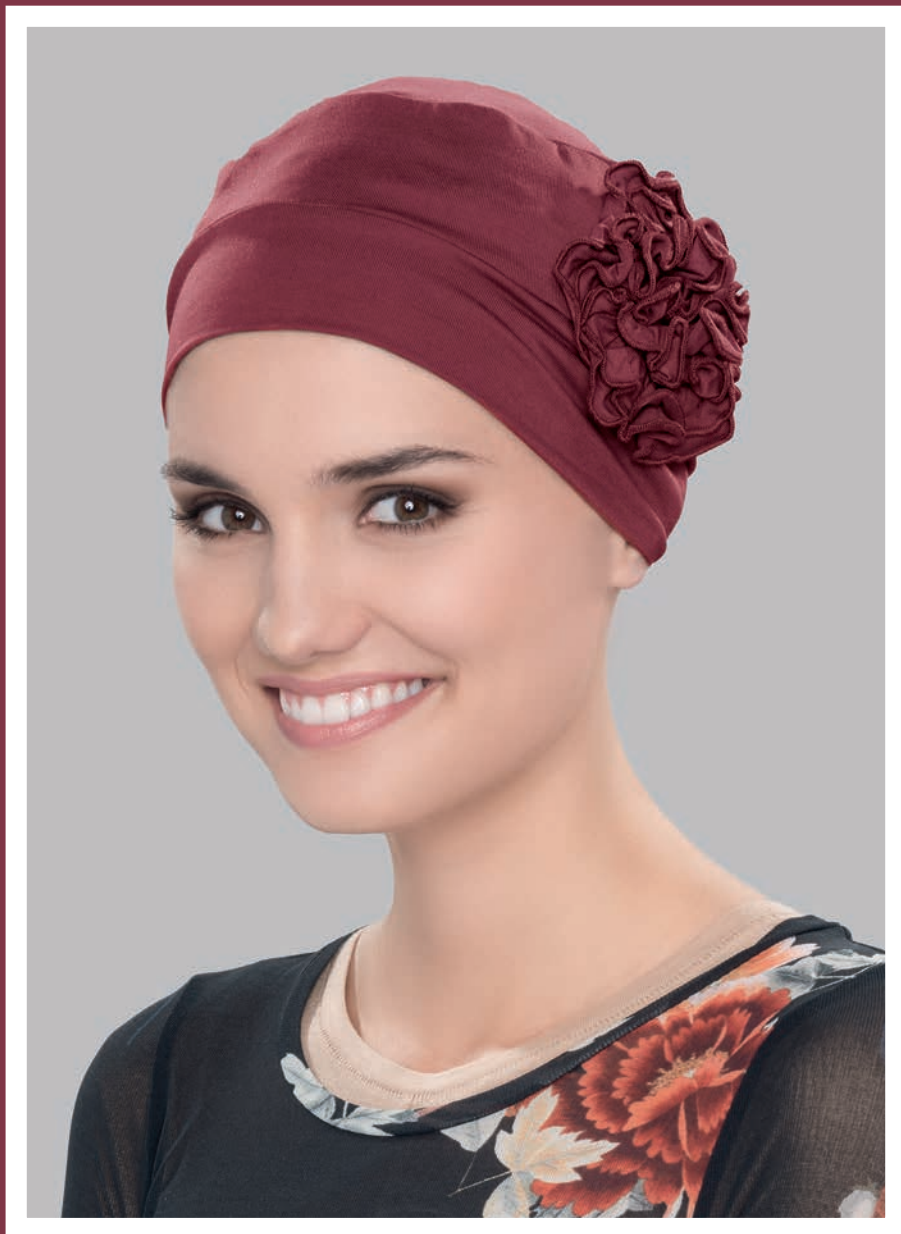


black



95 % Bamboo Viscose, 5 % Elastane

Ellen's
LYRA



colour: bordeaux

colour: jeans



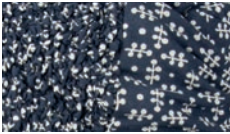
ELSA COLOURS:



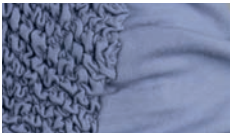
jeans



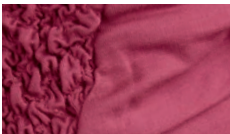
marine



disty mussel



lavender



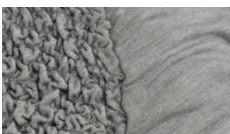
wine red



coral



taupe



grey melange

Ellen's ELSA



95 % Bamboo Viscose, 5 % Elastane

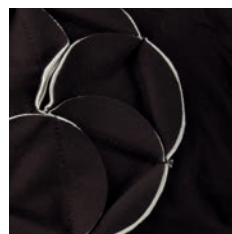
Ellen's MORA



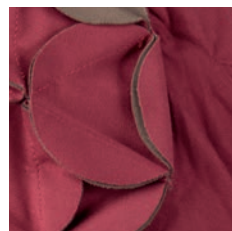
MORA COLOURS:



grey melange



black



wine red



dusty mussel



95% Bamboo Viscose, 5% Elastane



colour: grey melange

colour: purple



ANOKI COLOURS:



purple



chocolate



taupe



dark red



coral



antik pink



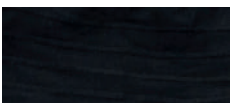
light grey



grey



marine



black

Ellen's
ANOKI



95 % Viscose, 5 % Elastane



Cap: 95 % Cotton, 5 % Elastane / **Band:** 100 % Polyester

GARBO COLOURS:



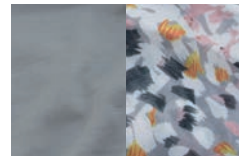
pink



burgundy



khaki



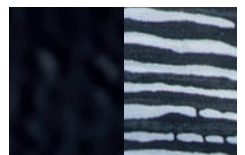
grey



marine



black flower



black

colour: pink



Ellen's
GARBO

Ellen's CAPANA



50 % Cotton, 50 % Linen





LONATA COLOURS:



black / white



white blue



sky blue



red



blue



80 % Cotton, 20 % Linen

Ellen's
LONATA

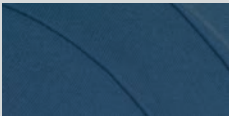


colour: black / white

colour: jeans



TALA BAMBOO COLOURS:



jeans



red



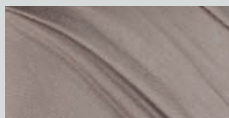
coral



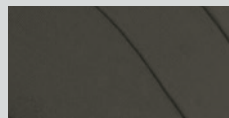
burgundy



aubergine



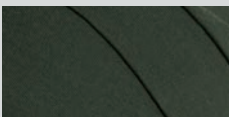
beige



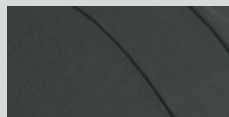
taupe



khaki



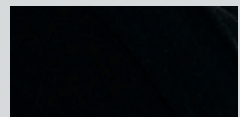
olive



grey



marine



black



95 % Bamboo Viscose, 5 % Elastane

colour: red

Ellen's
TALA BAMBOO

colour: flora taupe



Ellen's
TALA

TALA COLOURS



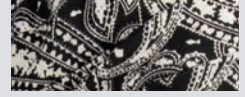
flora taupe **F**



flora blue **F**



ornament blue **F**



ornament black **F**



ethno **F**



letters black **F**



letters marine **F**



letters jeans **F**



letters coral **F**



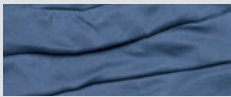
aqua white **E**



navy look **A**



night blue **D**



marine **D**



jeans **C**



azur blue **C**



ocean **C**



mint **C**



petrol **B**



dark red **C**



terracotta **B**



aubergine **F**



pink **B**



plum **C**



coral **C**



antik pink **C**



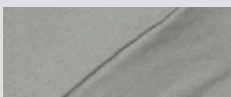
sand **C**



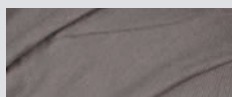
nature melange **C**



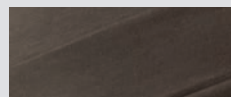
stone **D**



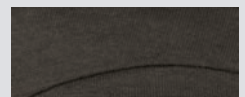
light grey **C**



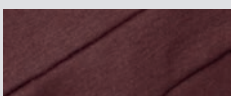
smoke **C**



olive **C**



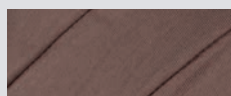
coffee **D**



chocolate **C**



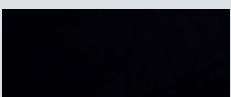
dark brown **B**



taupe **C**



grey **C**



black **D**

A 100 % Cotton

B 98 % Cotton, 2 % Elastane

C 95 % Cotton, 5 % Elastane

D 50 % Cotton, 50 % Polyester

E 100 % Viscose

F 95 % Viscose, 5 % Elastane

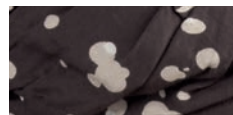
colour: brown



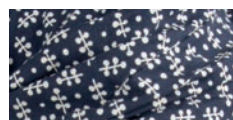
Ellen's MEDA



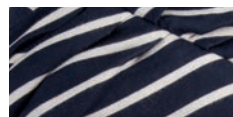
MEDA COLOURS:



brown **C**



disty mussel **A**



navy look **B**



dark sand **A**



black **A**

A 95 % Bamboo Viscose, 5 % Elastane

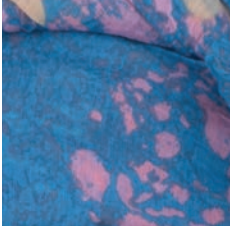
B 95 % Tencel, 5 % Elastane

C **Shell:** 100 % Viscose / **Lining:** 95 % Viscose, 5 % Elastane

Ellen's

NIDA SCARF

NIDA COLOURS:



night sky



sky blue



stone beige




coral

80 % Cotton,
20 % Silk

Size: 160 x 66 cm



Head scarf **NIDA** (night sky) wrapped around turban KIMI (night blue)



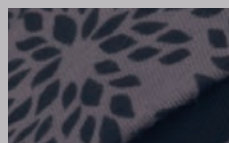
Head scarf NIDA (coral) wrapped
around turban KIMI (red)

Ellen's AMA

Great variety. Beautiful, whichever way you look at it.
THE AMA REVERSE LOOK.



AMA COLOURS:



taupe black



plum



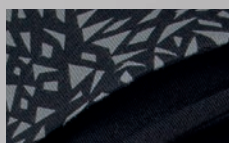
powder rose



triangle blue



arabesque blue



stone black

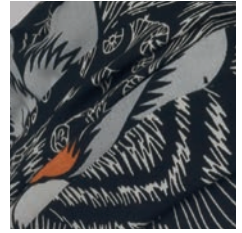


print grey

95 % Cotton,
5 % Elastane



AMA FINA COLOURS:



flora



flower power



marine white

100 % Viscose

Ellen's
AMA FINA

colour: black white

KIONA COLOURS:



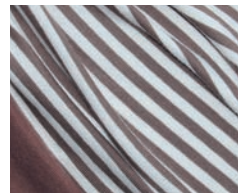
black white



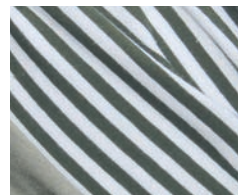
black grey



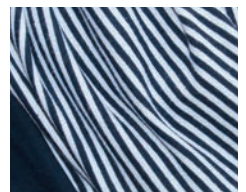
plum white



beige white



olive white



marine white



100% Cotton

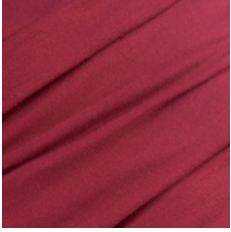
colour: black grey

Ellen's
KIONA

KIMI COLOURS:



blue ^B



red ^B



beige ^A



black ^A

^A
98% Cotton,
2% Elastane

^B
95% Cotton,
5% Elastane

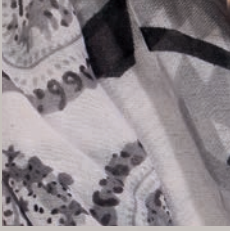
Ellen's
KIMI



colour: blue

Head Scarf FALA wrapped
around turban KIMI.

FALA COLOUR:



100 % Polyester
Size: 175 x 60 cm

Ellen's
FALA SCARF



YOKI COLOURS:



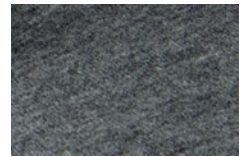
sand **A**



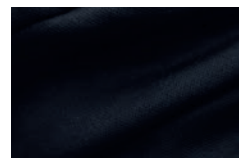
berry **B**



marine **A**



stonemelange **B**



black **A**

A

Lining:

100% Polyester

Shell: 95% Cotton,
5% Elastane

B

95% Cotton,
5% Elastane

colour: sand

Ellen's
YOKI

colour: taupe

MAIA COLOURS:



taupe **C**



coral **C**



night blue **A**



grey **B**

A
98 % Cotton,
2 % Elastane

B
95 % Viscose,
5 % Elastane

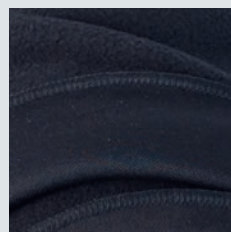
C
95 % Viscose,
5 % Elastane

Ellen's
MAIA

Ellen's MOTEGA



MOTEGA COLOUR:



black

100 % Polyester

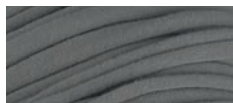


BANDS (grey) wrapped around turban TALA (light grey)

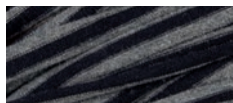
Ellen's BANDS

FLEXIBLE MULTI STRINGS

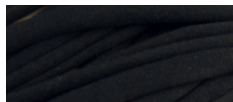
BANDS COLOURS:



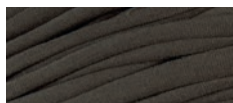
grey



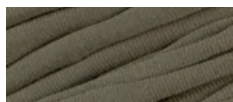
black grey



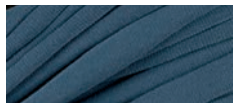
black



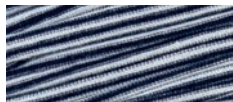
mocca



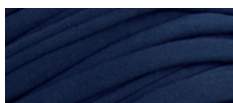
khaki



jeans



marine white



marine

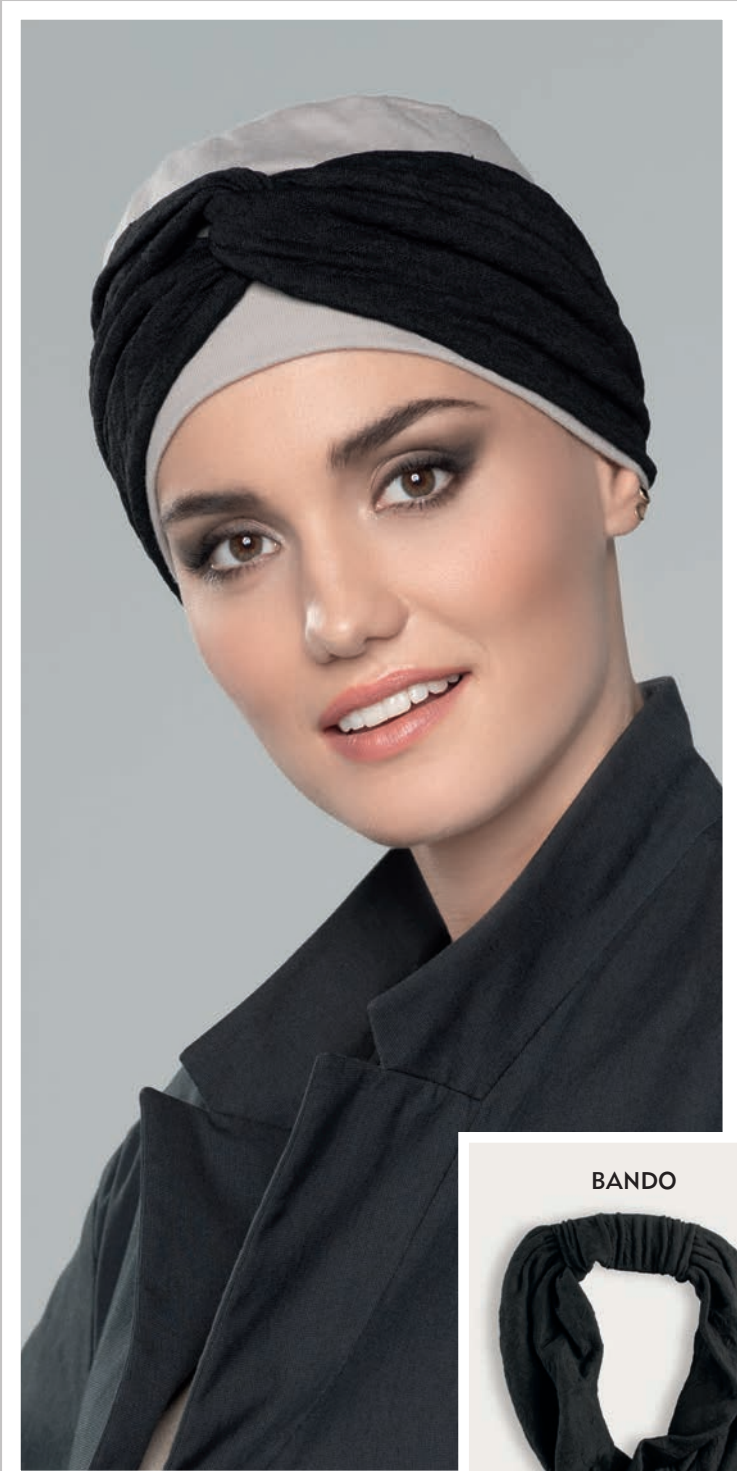


BANDS



colour: grey

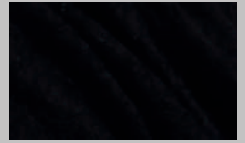
95% Cotton, 5% Elastane



Stretchband BANDO wrapped around turban TALA (light grey)



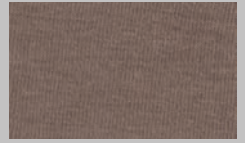
BANDO COLOURS:



black



grey



taupe



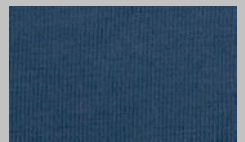
raspberry



red



marine



jeans

95 % Cotton,
5 % Elastane



Ellen's
BANDO
STRETCH BAND

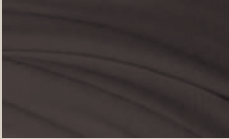
MINYA COLOURS:



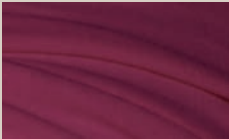
vanilla



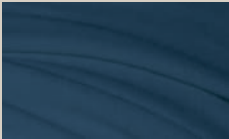
beige



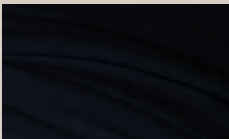
taupe



burgundy



jeans



black



Ellen's
MINYA



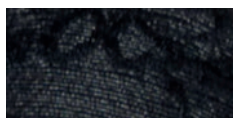
95% Bamboo Viscose,
5% Elastane

Ellen's KAYA STRETCH BAND

Also available as set.

Colours can be
combined flexible.

KAYA COLOURS:



black



taupe



beige



vanilla



burgundy



jeans



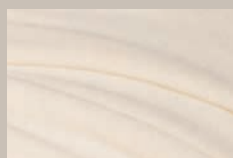
Stretch band KAYA wrapped around turban MINYA.



95 % Bamboo Viscose,
5 % Elastane

Ellen's NAMIDA

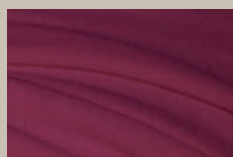
NAMIDA COLOURS:



vanilla



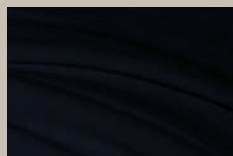
antik pink



burgundy



marine



black



95% Bamboo Viscose, 5% Elastane

Ellen's

SAGE PLUS

HAIRPIECE

TURBAN TALA COLOUR: marine
For additional colours see page 33

SAGE PLUS



15-20 cm

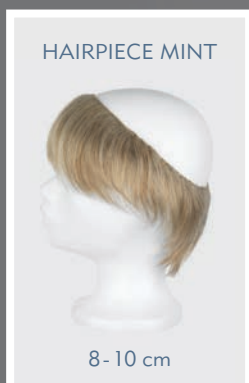
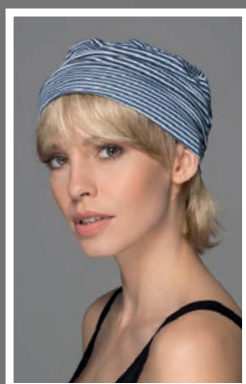
INSIDE VIEW



SAGE PLUS COLOURS:

dark brown, medium brown, light brown, **nut brown**, dark blonde, natural blonde, ginger blonde, gold blonde, light blonde

Ellen's MINT HAIRPIECE

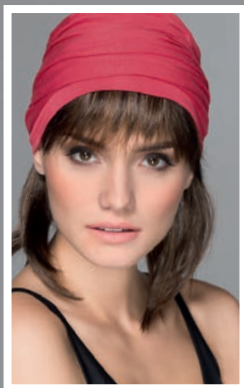


MINT COLOURS:

black, dark brown, medium brown
mahogany brown, light brown
nut brown, dark blonde, natural
blonde, ginger blonde, gold blonde
light blonde, platinum blonde
pearl grey, light grey, silver grey

TURBAN TALA COLOUR: navy look
For additional colours see page 33





HAIRPIECE SAGE



15-20 cm

SAGE COLOURS:

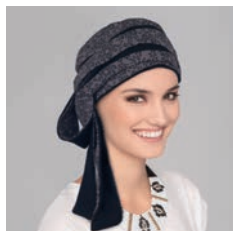
dark brown, medium brown
light brown, **nut brown**
dark blonde, natural blonde
ginger blonde, gold blonde
light blonde

TURBAN TALA COLOUR: dark red
For additional colours see page 33

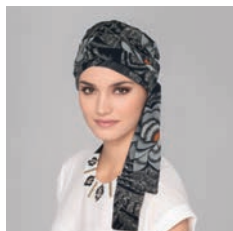
Ellen's SAGE HAIRPIECE

Ellen's OVERVIEW

TURBANS, CAPS & HATS



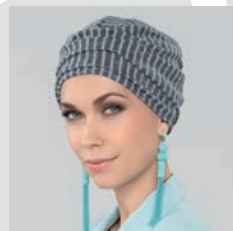
AMA P. 38



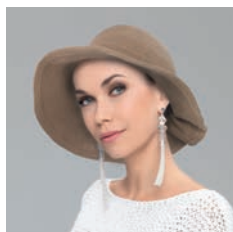
AMA FINA P. 39



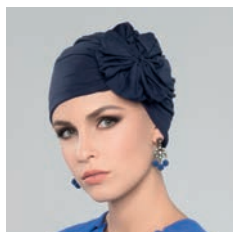
ANOKI P. 22-23



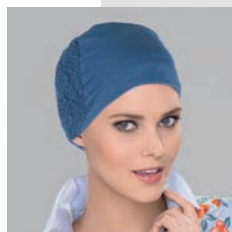
AVANI P. 4-5



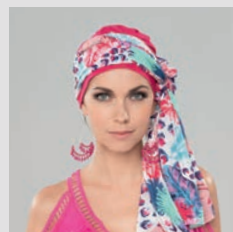
CAPANA P. 26-27



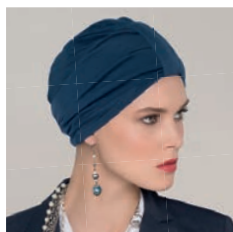
DORY P. 6-7



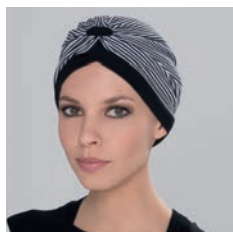
ELSA P. 18-19



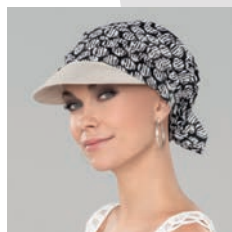
GARBO P. 24-25



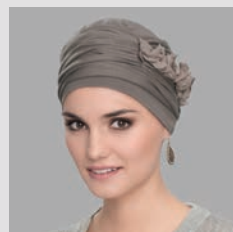
KIMI P. 42



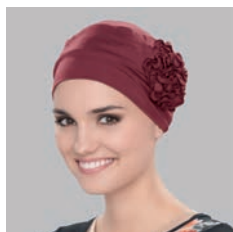
KIONA P. 40-41



LONATA P. 28-29



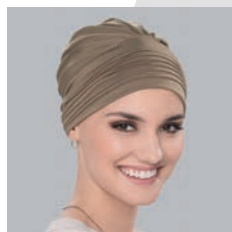
LULU P. 14-15



LYRA P. 16-17



MAGENA P. 12-13



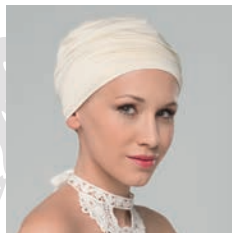
MAIA P. 46



MALOU P. 8-9



MEDA P. 34-35



MINYA P. 52



MISU P. 10-11



MORA P. 20-21



MOTEGA P. 47



NAMIDA P. 54



TALA BAMBOO P. 30-31
TALA P. 32-33



YOKI P. 44-45

HEADSCARFS



FALA P. 43



NIDA P. 36-37

HEADWEAR
YOU LOVE

HEADBANDS



BANDO P. 50-51

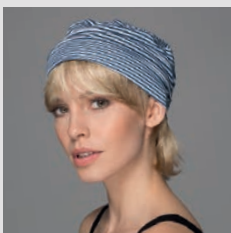


BANDS P. 48-49

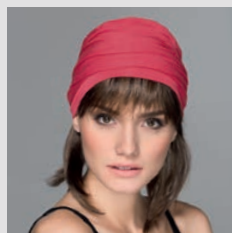


KAYA P. 53

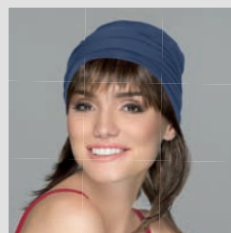
HAIRPIECES



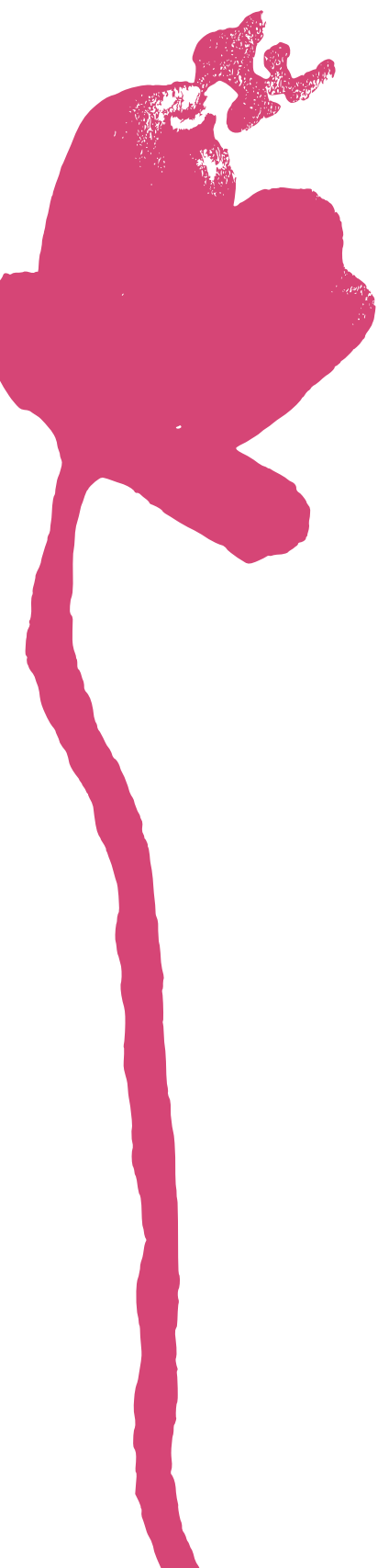
MINT P. 56



SAGE P. 57



SAGE PLUS P. 55



Ellen's
H E A D W E A R


ellen
wille

THE HAIR YOU LOVE



www.ellen-wille.de